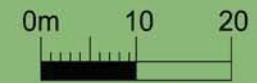


HOMESITE 26

ACRES: 0.76

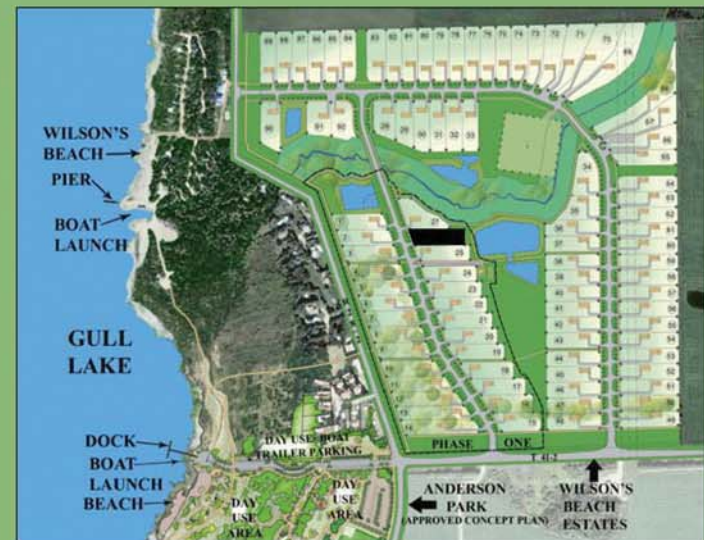
HECTARES: 0.307

- Trail to Gull Lake is in front of the homesite.
- 1,200 square foot accessory building is allowed on this homesite.
- A large Municipal Reserve is at the back of this lot.
- Landscape as you wish, subject to your northerly neighbors solar easement.
- Trees: This estate lot has Paper Birches, American Elms, and Swedish Columnar Aspens.



1:800

KEY PLAN



Natural Beauty. For Life.

WILSON'S BEACH ESTATES