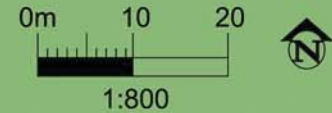


HOMESITE 18

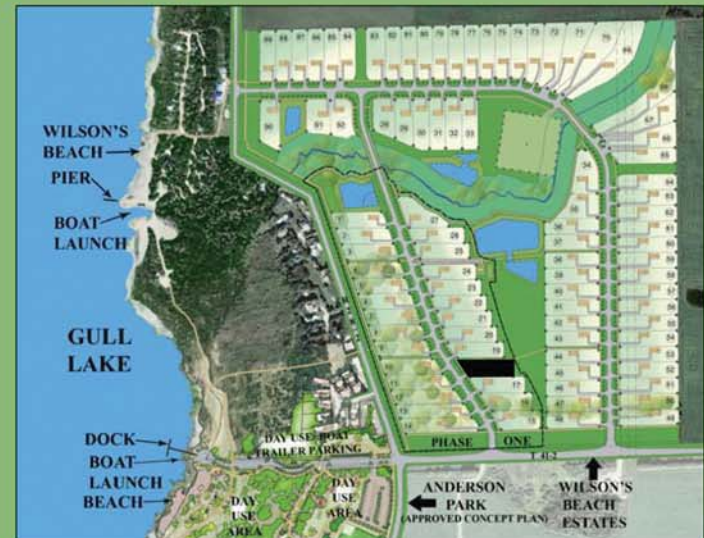
ACRES: 0.75

HECTARES: 0.305

- Trail to Gull Lake is in front of the homesite.
- 1,200 square foot accessory building is allowed on this homesite.
- A large Municipal Reserve is at the back of this lot.
- Landscape as you wish, subject to your northerly neighbors solar easement.
- Trees: This estate lot has Paper Birches, Prairie Spire Ashes, and Swedish Columnar Aspens.



KEY PLAN



Natural Beauty. For Life.

WILSON'S BEACH ESTATES