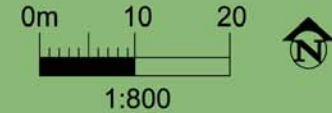


HOMESITE 16

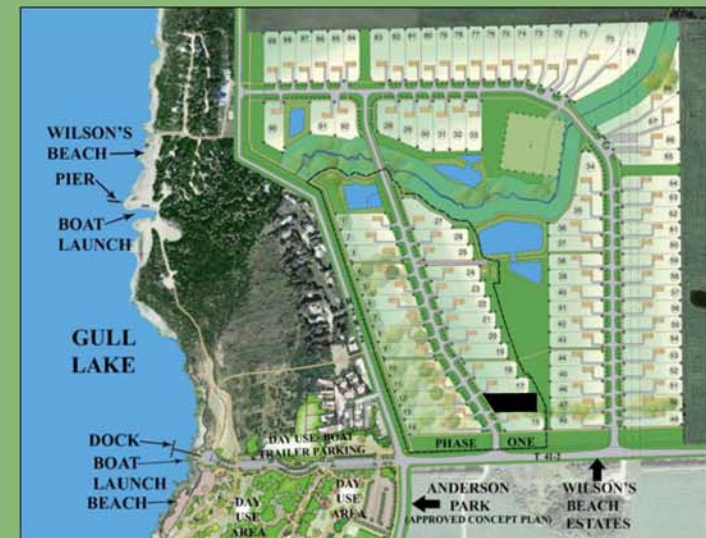
ACRES: 0.76

HECTARES: 0.307

- The southern edge of this estate sized homesite has a wide and thick row of mature trees.
- This homesite is over 110 feet wide.
- The paved trail in front of this homesite connects to Gull Lake and Anderson Park.
- A large Municipal Reserve is at the back of this lot.



KEY PLAN



Natural Beauty. For Life.

WILSON'S BEACH ESTATES